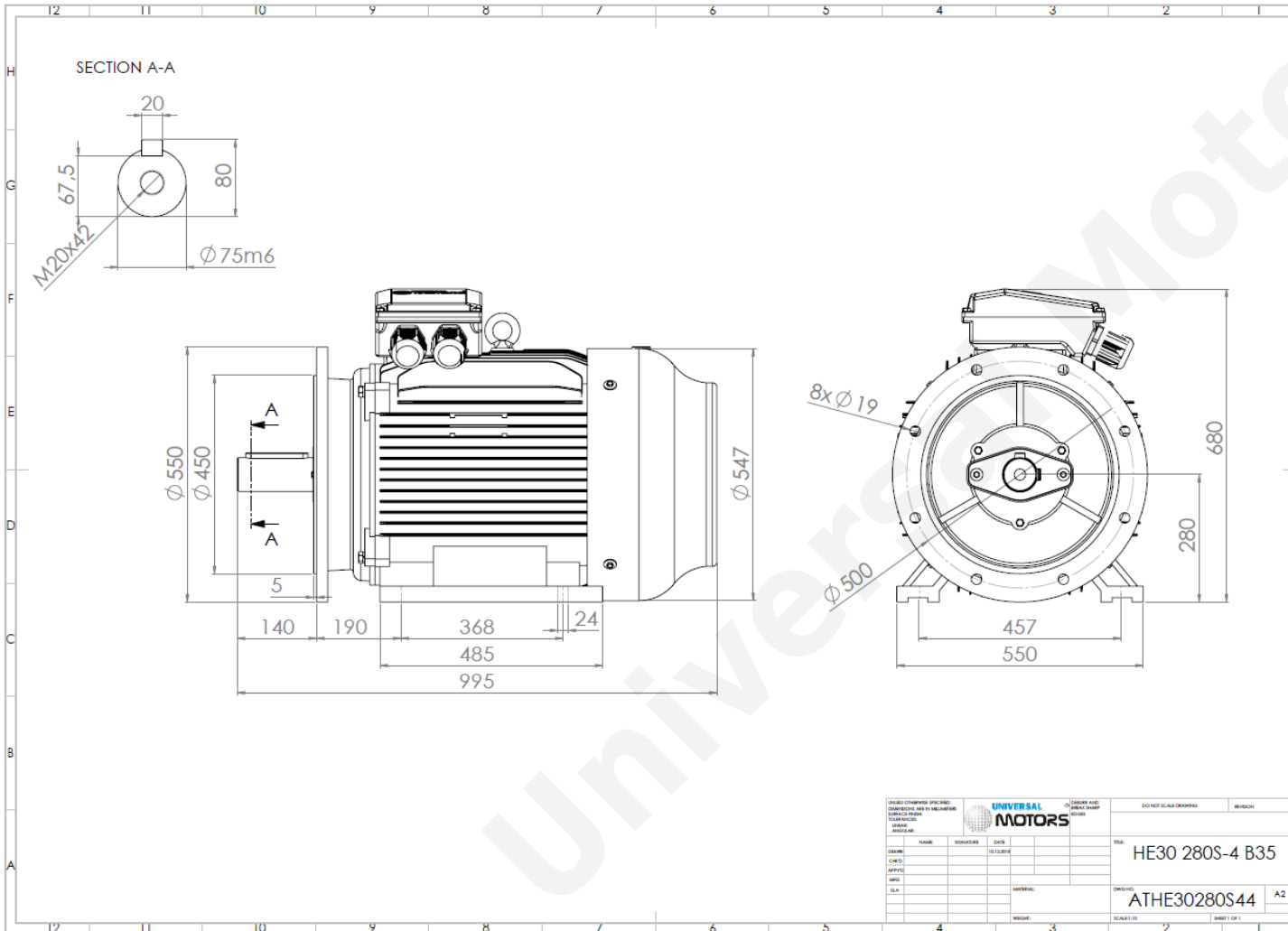


# TECHNICAL DATA

Three Phase Electric Motors - Cast Iron Frame  
HE30 280 S-4 IE2  
75 kW / 100 Cv  
1480 RPM



Motor type:	<b>HE30 280 S-4 IE2</b>
Output:	<b>75 kW / 100 Cv</b>
Speed ( $\text{min}^{-1}$ ):	<b>1480 RPM</b>
Frequency:	<b>50 Hz</b>
Voltage:	<b>400 V</b>
Current:	<b>131 A</b>
Power factor ( $\text{Cos } \varnothing$ ):	<b>0.88</b>
Poles:	<b>4</b>
Insulation class:	<b>F</b>
Temperature rise Class:	<b>B</b>
Efficiency 50%:	<b>93.5 %</b>
Efficiency 75%:	<b>94.5 %</b>
Efficiency 100%:	<b>94.0 %</b>
Torque:	<b>484 N.m</b>
T <sub>starting</sub> /T <sub>nominal</sub> :	<b>2.0</b>
I <sub>starting</sub> /I <sub>nominal</sub> :	<b>6.9</b>
T <sub>maximum</sub> /T <sub>nominal</sub> :	<b>2.3</b>
Noise:	<b>69 Db(A)</b>
Weight:	<b>589 Kg</b>
Bearing DE:	<b>6317 C3</b>
Bearing NDE:	<b>6317 C3</b>

<small>UNIVERSAL MOTORS</small>				<small>DO NOT SCALE DRAWING</small>		<small>REVISION</small>	
UNIVERSAL MOTORS				HE30 280S-4 B35		A2	
ATHE30280S44				A2			

Regime - S1

Altitude - 1000m

Environment Temperature - 40°C

**CONTACTS:**

UNIVERSAL MOTORS      Tel: +351 252 299 080  
 Rua de São Brás,745      Fax: +351 252 299 089  
 4480-782 VILA DO CONDE      Mail: [geral@universalmotors.pt](mailto:geral@universalmotors.pt)

\* References applied only in the UK